

Hydrogen Oxygen Machine

User Manuel For The
Immortal 3000ml



$H_2 = E$

Established 2017

Molecular Hydrogen
& Oxygen Therapy



www.H2Epod.com



CONTENTS

- 1.Function & Feature
- 2.Packing List
- 3.Basic Set Up
- 4.How To Add Distilled Water
- 5.How To Switch On
- 6.Smart Sensors
- 7.Smart Sensors
- 8.How To Change The Water Filter
- 9.How To Change The Water
- 10.Maintenance and FAQ
- 11.Precautions
- 12.Warranty

FUNCTION & FEATURE



The **immortal** has a default molecular hydrogen output set at **2000ml/min**, and the default oxygen outputs is **1000ml/min**. The total gas output is **3000ml/min**.

TDS



- TDS Water Quality Sensor is equipped to monitor the water quality in the water tank in real time.
- Machine tilt alarm sensor, this shows if the machine is not level.
- Built-in overheating, if the machine gets to hot the sensor will come on.
- Built-in Resin Filter to reduce water's impurity (TDS level)

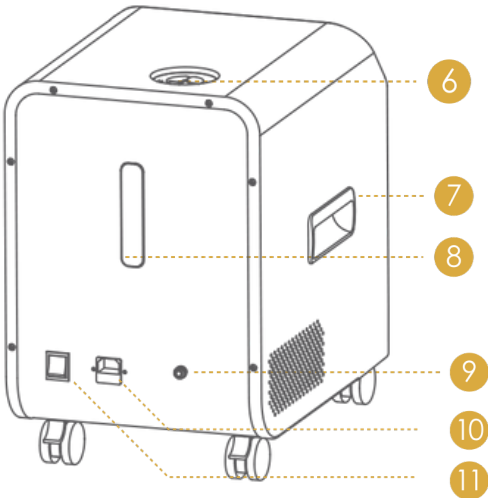
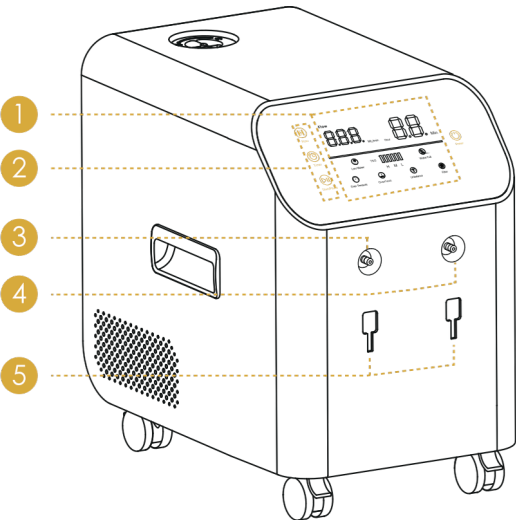


PRODUCT INTRODUCTION

MAIN UNIT

- 1.Function Display
- 2.Operation Panel
- 3.Hydrogen Outlet
- 4.(H2) Oxygen Outlet
- 5.(O2) Humidifier Bottle Buckles

- 6.Distilled Water Inlet
- 7.Machine Handles Water
- 8.Level Indicator Water
- 9.Drain Hole Power Cord
- 10. Plug Connection
- 11.Power Switch



PACKING LIST

No.	Accessory	Quantity	Notes	Warranty
1	Immortal 3000	1 PC		2 Year
2	Nasal cannula	3 PCs	Needs Replacing about every 3 months	—
3	Humidifier bottle	2 PCS		—
4	Connecting tube 7 cm	2 PCS		—
5	Filter installed	1 PC		—
6	Spare Filter	1 PC	Needs Replacing about every 12 months	—
7	Y shape connector	1 PC		—
8	Nasal Breathing Cannula	3 PCS		—
9	Drain tube	1 PC		—
10	Gas connecting tube 55 cm	1 PC		—
11	Spare Fuse	1 PCS		—
12	Power Cable	1 PC		—

BASIC SETUP

Fill the humidifier bottles with an appropriate amount of Distilled water (between the Min & Max level).

1

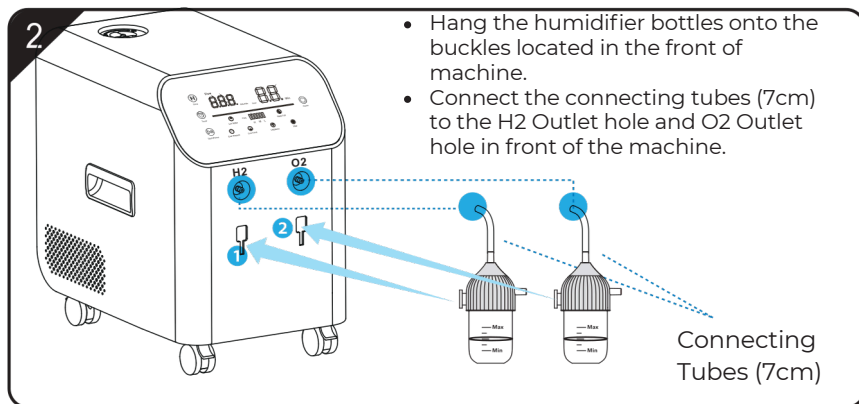


Humidifier Bottle

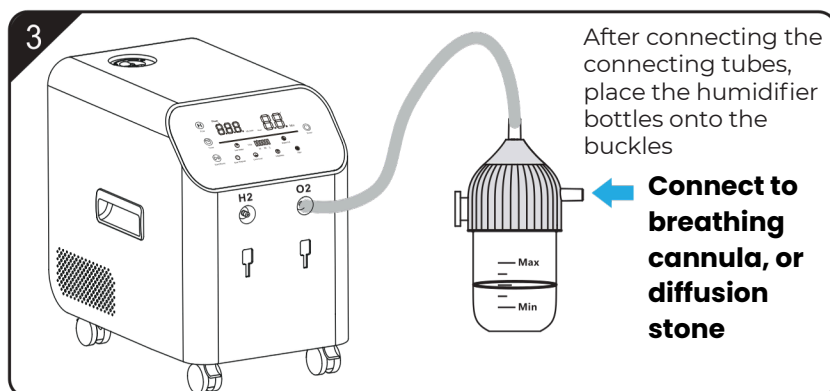
Connect connecting tubes (7cm) to the outlets on the machine

- Turn counterclockwise to open the cap.
- Fill the bottle with distilled water in between the Min & Max water indicator line.
- If water reaches the Max line, open the bottle and remove to the middle line where gas tube can still go through the water.

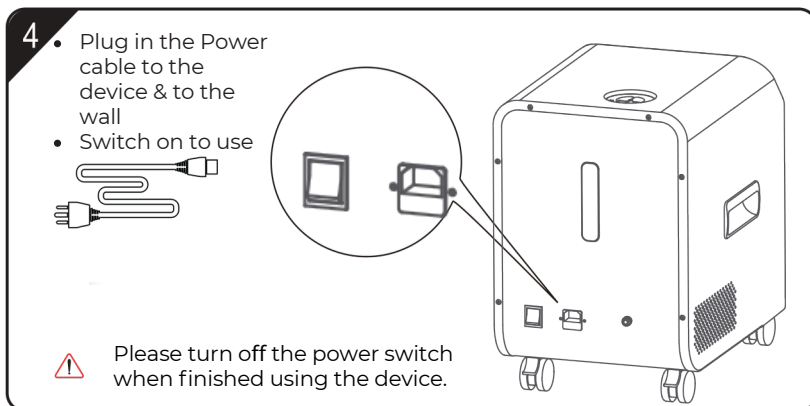
Connect one end of the connecting tube (7cm) to the outlet on the machine, and the other end to the top inlet of the humidified bottle.



Connect the nasal cannula tube to the output of the humidifier bottles.




Connect the power cable to the device & then plug it into the wall.
Then turn on the Power Switch on the back of the machine.



How To Add the Distilled Water

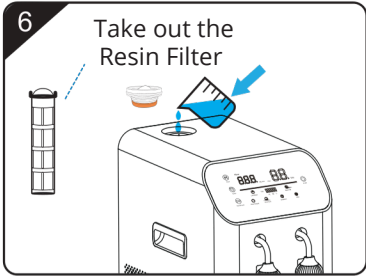
Fill 2L-2.6L of distilled water (TDS=0) into the tank (Note: 2.6L is the maximum water level, 1L is minimum water level) , and tighten the tank cover.

Unscrew open the water tank cover

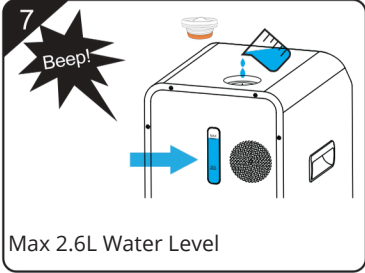


6 Fill with Distilled water ONLY

Take out the Resin Filter




7 **Beep!**



Max 2.6L Water Level

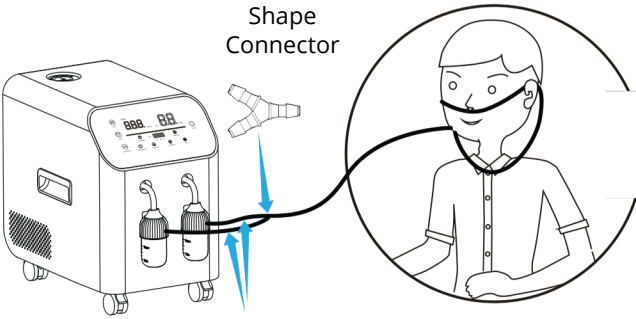
8 Screw back the water tank cover tightly



Insert the Resin Filter back

Connect Nasal Cannula

Install Y-Shape Connector

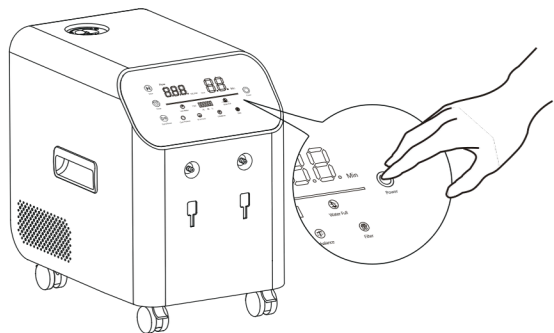


This setup is demonstrating a single person inhaling oxygen & hydrogen at 1500/ 3000m/min

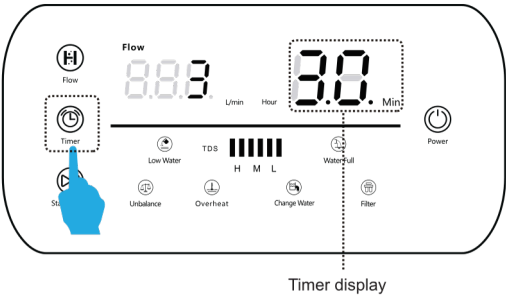
Hydrogen & Oxygen Connecting Tubes

How To Switch On

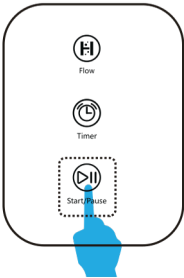
The Display Panel will light up when Power Switch is turned on, long press



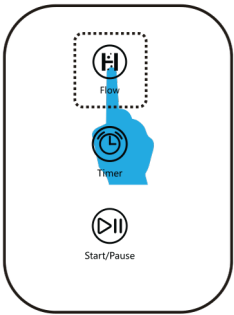
Press the“Timer” button to set working time: 30, 60, 90 minutes, 2, 3, 4 hours cycle setting.



Press Start/Pause button to start the machine;
Press the button again to Pause or Stop.

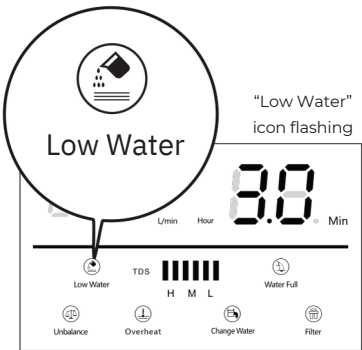


If your machine has the button "Flow"
press this to change the flow output
between 1.5 and 3L/min, the display
screen will show the corresponding set
values of 1.5 and 3 (1500ml or 3000ml)



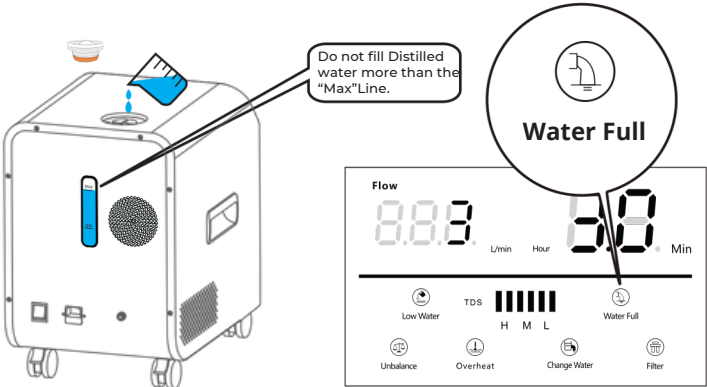
Low Water Indicator

Flashing “Low Water” icon indicates the water in the tank is less than “Min” water level. The machine will automatically stop working when water level is below the “Min” level and give a prompt Beep alarm. Add Distilled water to the “Max” water level line.



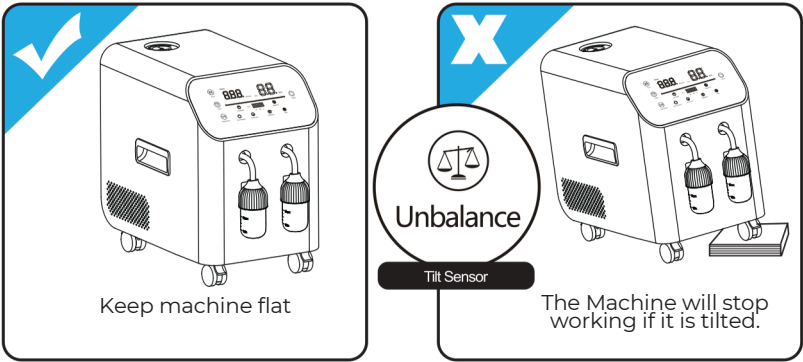
Water Full

Flashing "Water Full" icon on the display indicates the water in the water tank is higher than the maximum water level, and the blue water tank light will flash to prompt. This means it needs to drain some water and observe the water level on the back of the equipment.



Unbalance Indicator

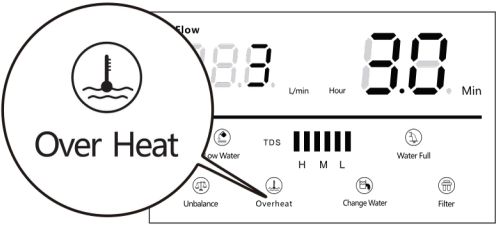
The “ Unbalance”icon flashes when the machine is tilted or not on a flat surface, and a long Beep sound will alarm until the machine is laid on a flat surface.



Over Heat Indicator

When the internal H2 production module is over heated, the machine stops working to protect the device, and the“ OverHeat” icon flashes. Let the machine cool down, then re-start working. Observe if the H2 gas output in humidified bottle is normal. If it's abnormal, drain out all the water from the tank, and add new distilled water to speed up the cooling process, then re-start the machine.

“Over Heat”
icon

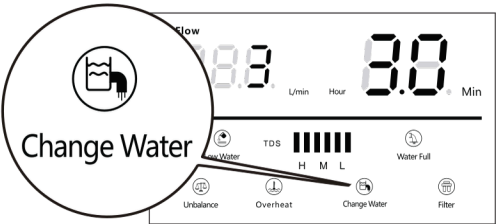


Change Water Indicator

When the machine works for half a month to a month, the Change Water icon will flash a prompt, please drain the water from the tank, go to Page 9 for how to drain water.

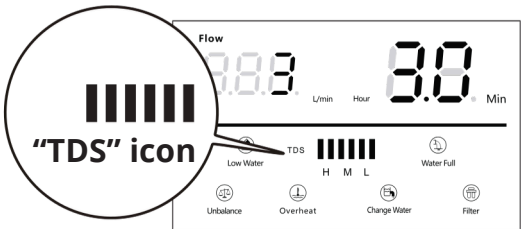
Note: When prompted to "Change water" and complete the change, long press the "Flow" button until it beeps twice to restore normal operation.

“Change Water”
icon



Water Quality Indicator (TDS)

TDS water quality sensor is built into the water tank to monitor water quality in real time. Water quality displays has three grades: High (H), Medium (M), & Low (L). With corresponding colors in green, yellow and red. Flashing color icon indicates the current water quality level. Machine stops working when water quality is at Low (Red). Change to new Distilled water in the water tank and re-start the machine when water quality returns to High (green). Make sure to change Resin Filter on a regular basis.

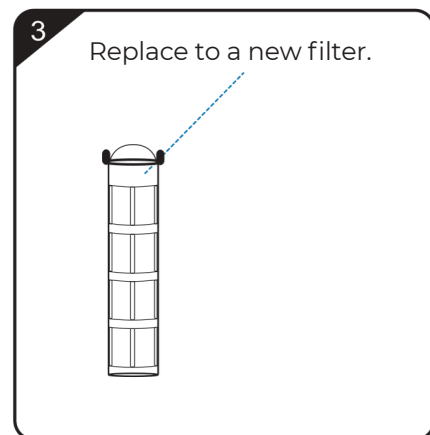
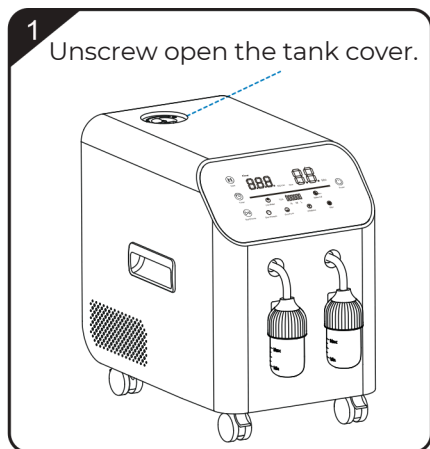


Resin Water Filter Replacement

If the "Filter" icon flashes when the machine has been working for 6-12 months. The Resin filter will need replacing in the water tank by following the steps below :

Unscrew open the water tank cover (Fig.1). Take out the Resin filter by pulling it out (Fig. 2). Replace to a new Resin filter (Fig. 3) Insert the new Resin filter, and screw on the water tank cover tightly (Fig. 4)

To Reset the Filter Indicator: Turn on the power, Press & Hold "Mode " button until it beeps twice.



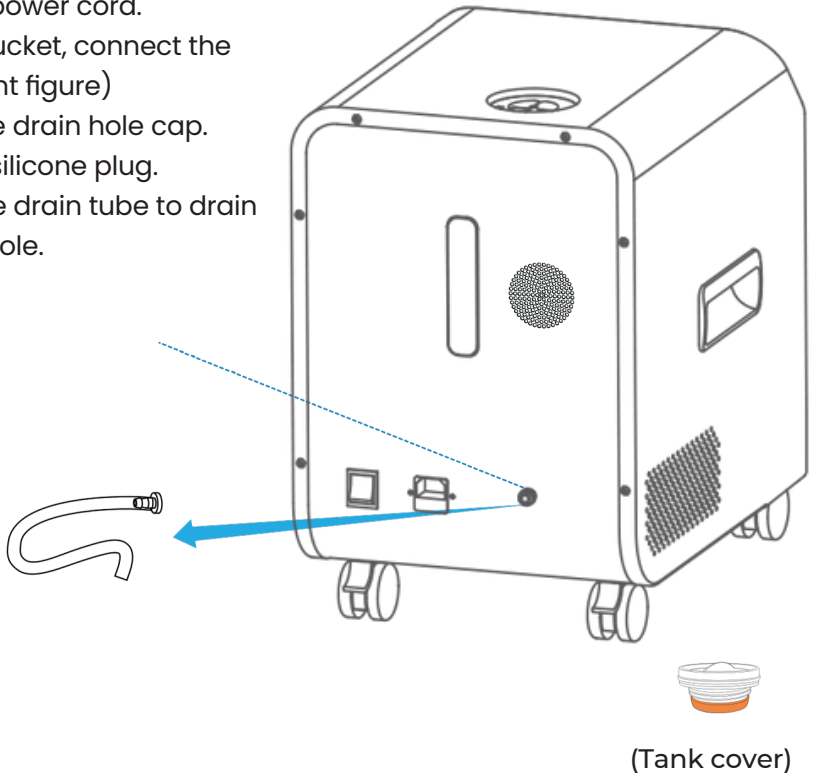
CHANGING WATER/DRAINING WATER

You only really need to change the distilled water in the machine, if the machine flashes orange or red on the TDS reader. It is recommended to drain away water from the water tank & add to new Distilled water at least 2 times a month for the following situations:

- Long haul, travel.
- By adding, by mistake improper water (Water Quality TDS is poor.)
- When machine is not working, and no gas is being produced, and display says “Err”

How To Drain Water

- Unplug the power cord.
- Prepare a bucket, connect the drain tube. (Right figure)
- Unscrew the drain hole cap.
- Pull out the silicone plug.
- Connect the drain tube to drain from drain hole.



Unscrew open the top water tank cover, water will start draining out.
Plug back in the silicone plug and screw on the drain hole cap.

Note: Keep the drain hose somewhere you can find it for future use.

MAINTENANCE

Since The Immortal only uses distilled water, maintenance on the device is minimal under normal conditions & uses. But occasionally if you start to notice that your device is not producing H₂ normally or performing optimally, it may be due for service, cleaning or maintenance.

If you are experiencing any of the following issues with the devices:

- Hydrogen Output is weaker.
- There are no bubbles infused in the humidifier bottles.

FAQ

- After finishing use, press power button to shut down. After shutdown, the power wire cannot be removed immediately. The machine needs time to fully dissipate heat, please remove power wire only when the fan stops completely.
- In case of sudden power failure during use due to force majeure factors, the power should be switched on again after an interval of 5 minutes.
- It is normal to spray a small amount of water from O₂ outlet when in use. When the water in humidified bottle reaches the Max line, open the bottle and remove to the middle line. Only no choking water, choking nose, please feel free to use.
- When starting the machine, it is normal to spray a small amount of water from H₂ & O₂ outlets, because the water vapor accumulates in the pipeline after liquefaction. Please feel free to use.
- Sometimes there is a small squeaking sound when in use which is a normal phenomenon caused by water vapor separator drainage, please feel free to use.
- Sometimes if the water needs changing, and the machine has not reset itself, please press and hold the mode button for 2 minutes, this resets the settings.

PRECAUTIONS

- Use ONLY Distilled Water (TDS = 0) to your immortal 3000. Using other water with poorer quality or with minerals may damage the machine.
- Turn off the Power Switch on the back of the machine to shut off the machine completely when not using the device, to prolong the life span of the machine.
- When using your immortal 3000 for inhaling hydrogen and oxygen for the first time, do not inhale for more than 30 mins per day. After your body is more accustomed to breathing in H₂ gas then gradually increase the total amount of time to more hours, please refer to our protocols for more details.
- It is recommended to replace the nasal cannula about every 2-3 months depending on the frequency of usage. Each nasal cannula should be dedicated to one person for hygiene purposes.
- If the machine is not to be used for a long time, please make sure the distilled water in the machine is above half full as the electrode plates in the machine need to be kept wet to function properly when it's time to use it again.
- It is normal that a new machine has water inside. The water in the water tank is to protect and moisture the electrode in the machine. This water in the water tank is 100% clean pure distilled water.
- Do not block the Heat Cooling Vents when the machine is running. Make sure to operate the machine in a cool & ventilated environment.
- When the outdoor temperature is below 5°C, the machine must be placed at room temperature for 24 hours before use.
- Children or people who do have any experience should not operate the device without supervision or permission.
- If you are feeling any discomfort, stop using the device immediately and consult with your doctor.
- Do not disassemble, repair or modify the machine. Any tampering, Modification, or improper use will void the warranty.



Terms & Conditions & Warranty

Your **Immortal 3000** includes a **2-year warranty** from your date of purchase. To read all the details please go to our terms and condition page.

If you have any questions, please message us via our contact page. Or email us at info@h2epod.com

From the team at H2=E we wish you the very best health and happiness and we hope you get many health benefits from your Immortal 3000.

H2=E